

**R. M. Payne's Toll Road
&
Related Stage Roads

Route & Maps**

**Complied by
Ralph Thompson**

**GPS by
Rocky Layne**

Mr. Payne's Toll Road & Related Stage Roads

R. M. Payne was a regional businessman in the late 1800s and early 1900s. Included among his many business interests were the entertainment attraction of Wonder Cave in Pelham Valley and the Monteagle Hotel on the mountain.

In 1903, another business opportunity presented itself to Payne. He needed a good road between the ever growing Sunday School Assembly Grounds and Wonder Cave to entice more customers to visit the cave. At the same time farmers in the valley needed a better road to bring their produce to market on the mountain. Thus the Monteagle and Pelham Turnpike Company was born.

The Payne Toll Road was essentially new construction from the valley up to the point that it merged with the Manchester to Monteagle Stage Road. For the last mile, the Toll Road used the old Stage Road roadbed. The Stage Road had probably not been used as such for a number of years. Stage service between Nashville and Chattanooga peaked between 1830 and 1860. Once the railroads were in place only a few local stages might have operated.

The purpose of this paper is to capture and preserve data on the routing of both the Toll Road and related Stage Roads.

This project was made possible through the efforts of Rocky Layne. He spent several days in the field collecting the GPS data that allowed for the accurate plotting of these roads.

Table of Contents

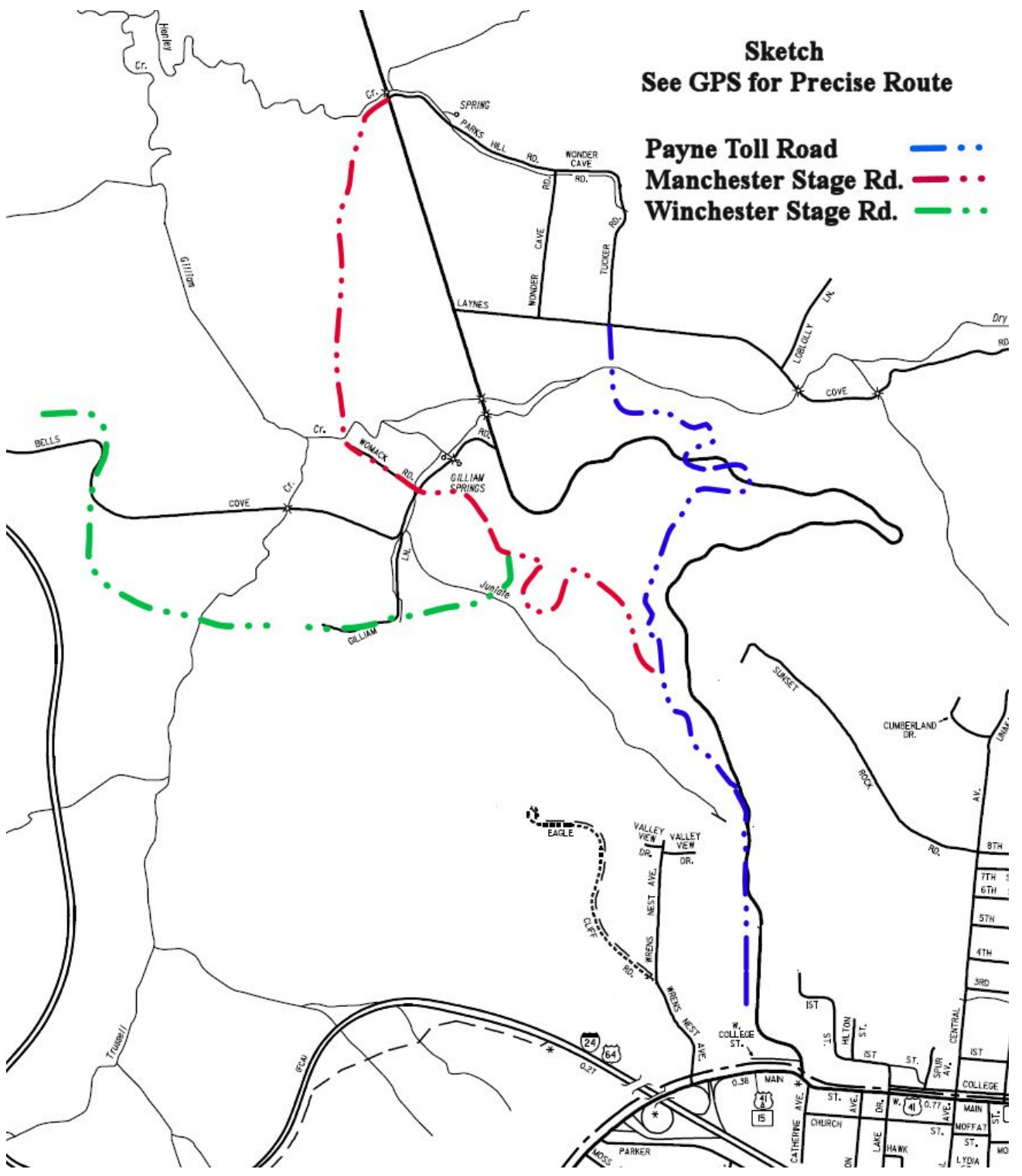
1. Sketch Map of Roads
2. 1939 Aerial Photo with Toll Road Visible
3. Survey Plat of a Section of Toll & Stage Rd.
4. Detailed GPS Data

An On-Line map is available at the following location

<http://goo.gl/maps/OqT4Y>

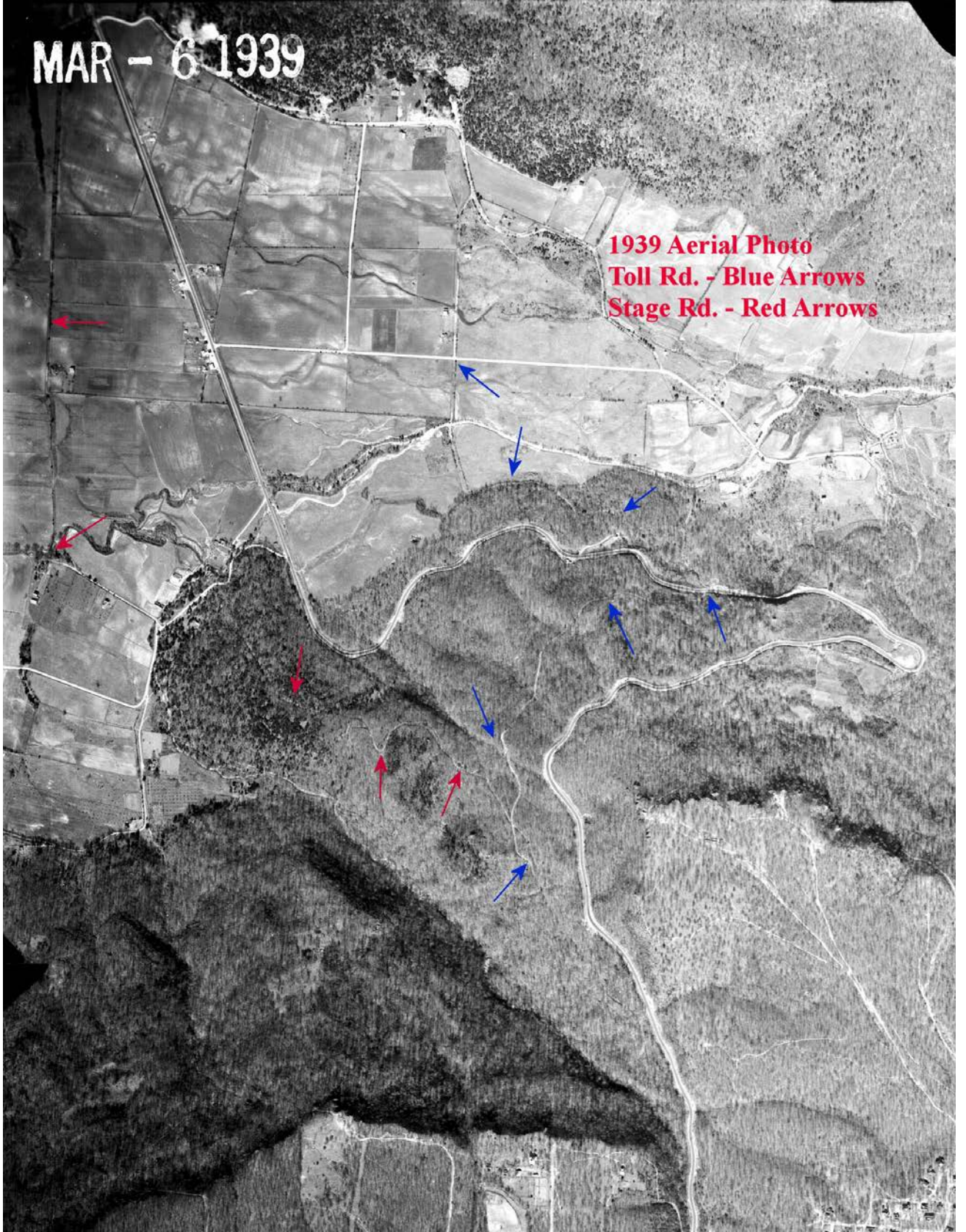
Sketch
See GPS for Precise Route

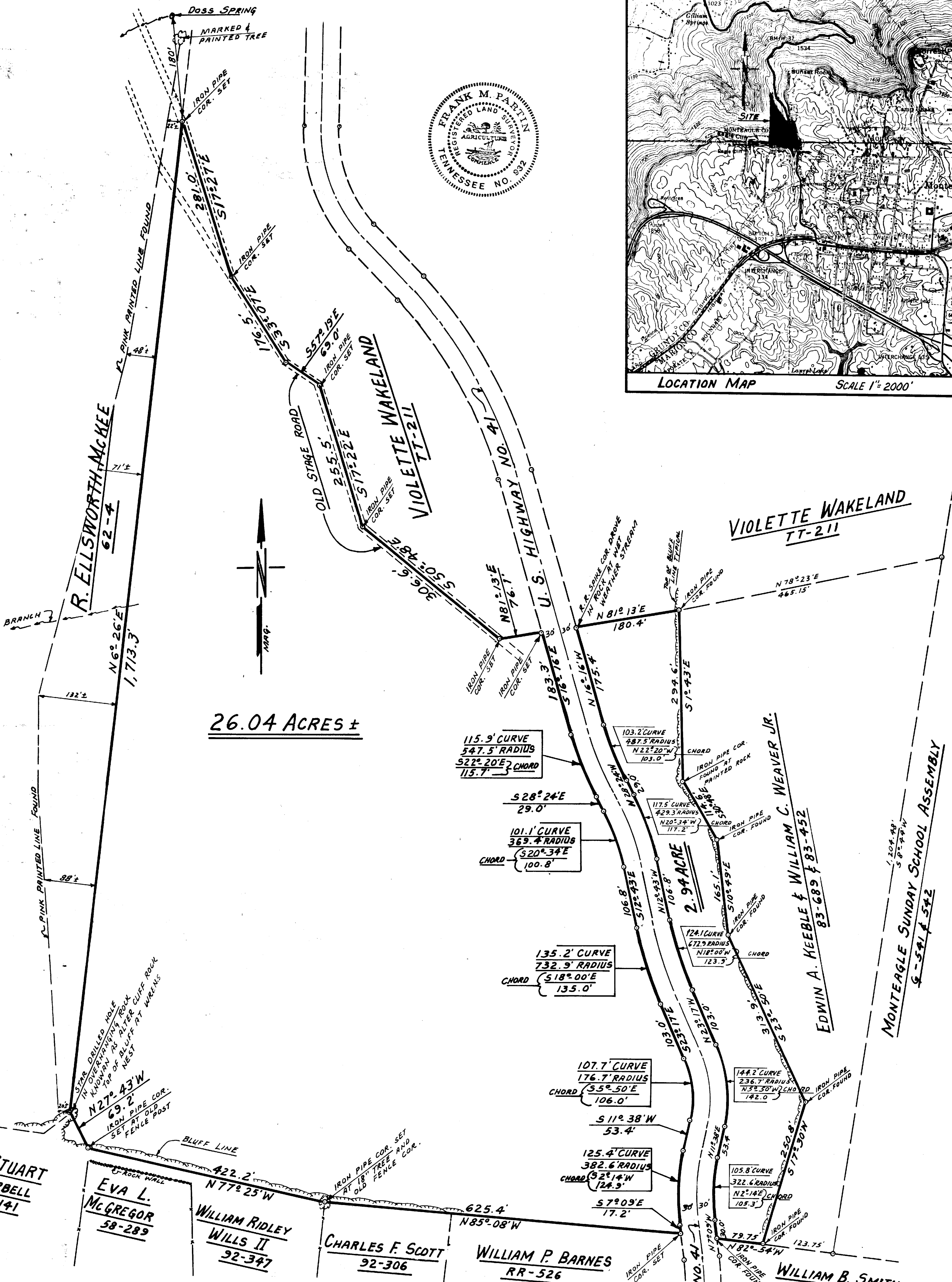
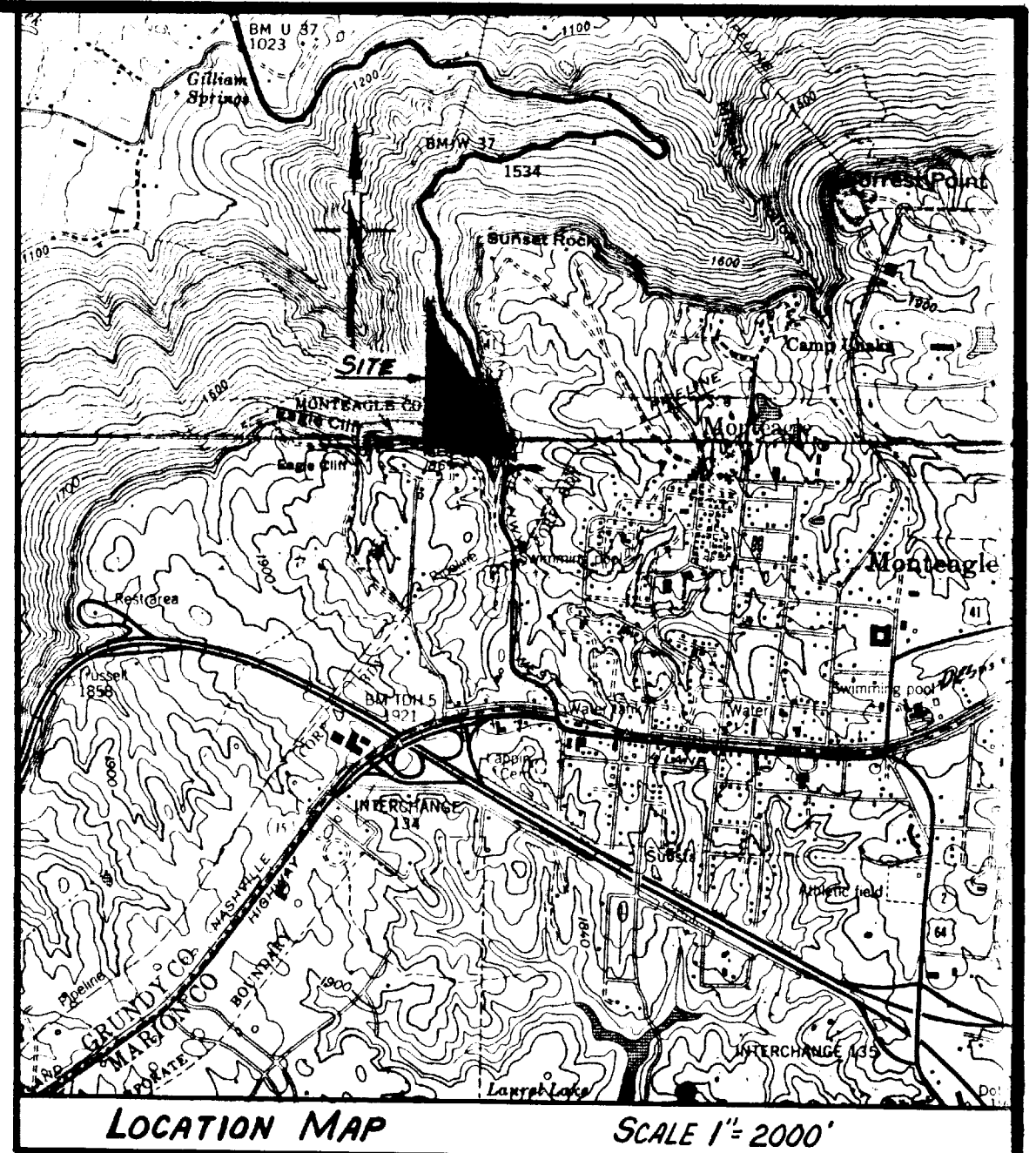
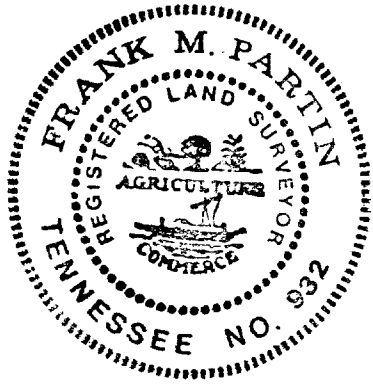
- Payne Toll Road** — · — · — ·
- Manchester Stage Rd.** — · — · — ·
- Winchester Stage Rd.** — · — · — ·



MAR - 6 1939

1939 Aerial Photo
Toll Rd. - Blue Arrows
Stage Rd. - Red Arrows



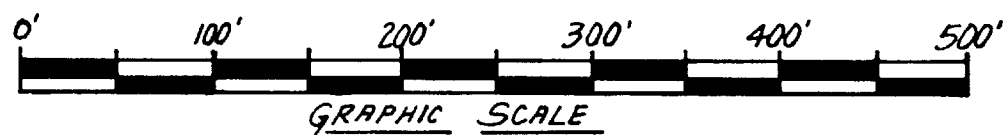


I HEREBY CERTIFY THAT THIS IS A CLASS "E" MARGINAL LAND SURVEY, AND THE RATIO OF PRECISION OF THE UNADJUSTED SURVEY IS 1" = 3000' AS SHOWN HEREON.

Frank M. Partin

FRANK M. PARTIN
REG. SURVEYOR NO. 932
R. R. 3, BOX 93
DECHERD, TENN. 37324
PHONE: 615-967-6944

PROPERTY SURVEY DRAWING
R. A. FRANCIS & WIFE HEIRS
DEED REF. BK. LL, Pg. 301
4TH CIVIL DIST., MONTEAGLE, GRUNDY CO., TENN.
SCALE: 1" = 100' FEB. 5, 1988



STATE OF TENNESSEE, GRUNDY COUNTY
The foregoing instrument and certificate were noted in Note Book 7, Page 34 at 10:00 o'clock AM Feb 10 1988 and recorded in Plat Book 1, Series Page 126
State Tax Paid \$ Fee Recording Fee \$
15.00 Total \$ 15.00 Witness My Hand.
Receipt No. 16437

J. S. Childers
Register

GPS for Payne Toll Road

T1	N 35° 16.026	W 85° 50.911
T2	15.988	50.995
T3	15.945	50.998
T4	15.844	50.976
T5	15.849	50.931
T6	15.861	50.892
T7	15.852	50.859
T8	15.832	50.817
T9	15.811	50.790
T10	15.814	50.747
T11	15.798	50.725
T12	15.783	50.727
T13	15.773	50.739
T14	15.747	50.785
T15	15.695	50.605
T16	15.696	50.611
T17	15.682	50.689
T18	15.696	50.704
T19	15.696	50.753
T20	15.682	50.784
T21	15.664	50.796
T22	15.627	50.823
T23	15.566	50.865
T24	15.481	50.910

Crosses Powerline

T25	N35 15.478	W85 50.910
------------	-------------------	-------------------

T26	15.463	50.904
T27	15..440	50.895
T28	15.423	50.897
T29	15.406	50.907
T30	15.383	50.906
T31	15.355	50.906
T32	15.343	50.881
T33	15. 338	50.877
T34	15.303	50.865
T35	15.274	50.841
T36	15.232	50.817
T37	15.216	50.802
T38	15.209	59.781
T39	15.165	50.763
T40	15.148	50.763
T41	15.130	50.734
T42	15.105	50.710
T43	15.086	50.712
T44	15.079	50.703
T45	15.053	50.671
T46	14.944	50.642
T47	14.797	50.625
T48	14.696	50.631
T49	14.573	50.633

End of Toll Road Survey

Monteagle Hwy 41 & 64

Monteagle - Manchester Stage Road

Google Map points highlighted in grey.

S1	15.385	50.907
S2	15.447	50.941
S3	15.448	50.946
S4	15.457	50.980
S5	15.474	50.998
S6	15.480	51.003
S7	15.495	51.019
S8	15.530	51.052
S9	15.531	51.086
S10	15.529	51.102
S11	15.513	51.113
S12	15.497	51.121
S13	15.499	51.132
S14	15.504	51.138
S15	15.522	51.142
S16	15.530	51.145
S17	15.533	51.154
S18	15.532	51.179
S19	15.532	51.147
S20	15.536	51.153
S21	15.549	51.174
S22	15.552	51.189
S23	15.556	51.204

S24	15.562	51.217
S25	15.570	51.264
S26	15.580	51.292
S27	15.674	51.369
S28	15.680	51.383
S29	15.681	51.418
S30	15.669	51.436
S31	15.673	51.448
S32	15.678	51.478
S33	15.679	51.477
S34	15.688	51.498
S35	15.768	51.627
S36	15.796	51.654
S37	15.803	51.657
S38	15.896	51.658
S39	15.964	51.655
S40	15.988	51.663
S41	16.042	51.658
S42	16.467	51.613
S43	16.498	51.555
S44	16.513	51.548

End of Stage Road GPS

Hwy 41 and Nickajack Trail in Pelham Valley

Alto / Winchester Stage Rd

Google Map points highlighted in grey.

W1	N 35 15.525	W 85 51.183
W2	15.501	51.178
W3	15.484	51.186
W4	15.474	51.193
W5	15.465	51.201
W6	15.444	51.203
W7	15.438	51.210
W8	15.435	51.235
W9	15.450	51.295
W10	15.443	51.321
W11	15.438	51.375
W12	15.438	51.418
W13	15.429	51.448
W14	15.414	51.458
W15	15.405	51.493
W16	15.409	51.517
W17	15.406	51.589
W18	15.395	51.609
W19	15.395	51.676
W20	15.403	51.709
W21	15.424	51.779
W22	15.444	51.897
W23	15.452	51.965
W24	15.459	51.995
W25	15.495	52.206

W26	15.516	52.239
W27	15.649	52.27
W28	15.672	52.321
W29	15.742	52.294
W30	15.743	52.276
W31	15.748	52.243
W32	15.78	52.212
W33	15.794	52.214
W34	15.822	52.227
W35	15.831	52.261
W36	15.823	52.272
W37	15.806	52.339
W38	15.815	52.429

End of Alto / Winchester Stage Road

Connector Road GPS

Google Map points highlighted in grey.

C1	15.474	51.262
C2	15.479	51.294
C3	15.487	51.317
C4	15.486	51.330
C5	15.492	51.354
C6	15.485	51.363
C7	15.488	51.370
C8	15.486	51.373
C9	15.534	51.441
C10	15.573	51.463

C11	15.586	51.480
C12	15.604	51.488
C13	15.633	51.472
C14	15.655	51.455
C15	15.675	51.468

End of Connector Road